



THE SUNRISE

CROSSINGS SERIES

PROFILE

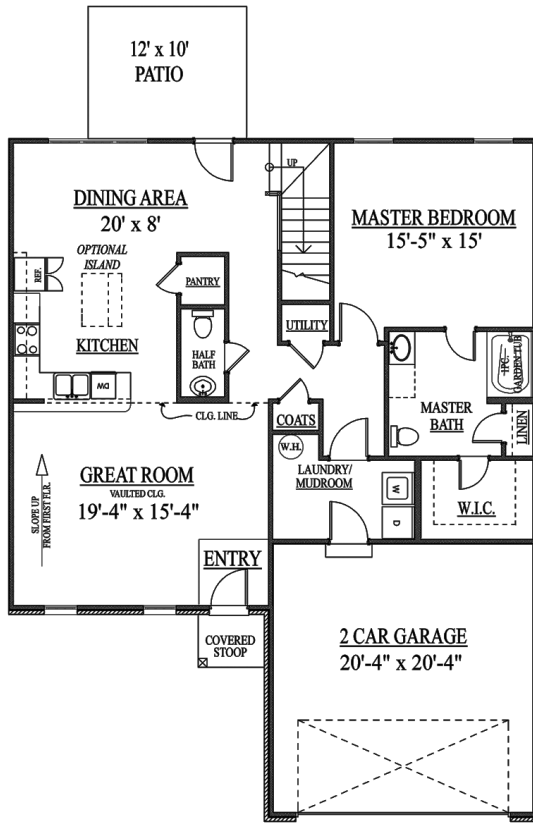
1,887 Square Feet
3 Bedrooms, 2.5 Baths
12' x 10' Patio
First Floor Master Bedroom
Two Car Garage with Opener and Remote
Brick Front with 30-Year Dimensional Shingles
Smooth Ceilings Throughout
Electric Heating and Cooling
Choice of 30" Maple, Oak or Cherry Cabinets with Knobs
Vaulted Ceiling in Great Room
1 Piece Garden Tub in Master Bath
Double Bowl Vanities in Master Bath
Large Walk-In Closets
52 Gallon Electric Water Heater
Armstrong Vinyl Flooring in Kitchen/Breakfast, Baths and Laundry
Choice of Shaw California Shag or Plush Carpet Throughout
Ceramic Tile in Foyer
Black Appliance Package
Optional Fireplace with Mantel and Marble Surround
Optional 48" Shower and Separate Tub in Master Bath
Optional Covered Front Porch and Dormer as Shown

Ask your new homes specialist about the many designer features available.

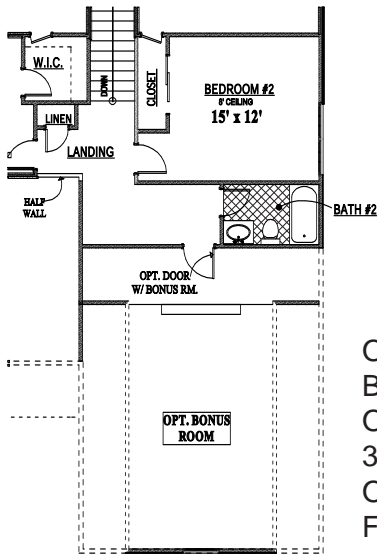
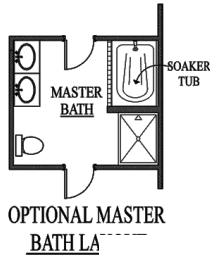


09/29/14

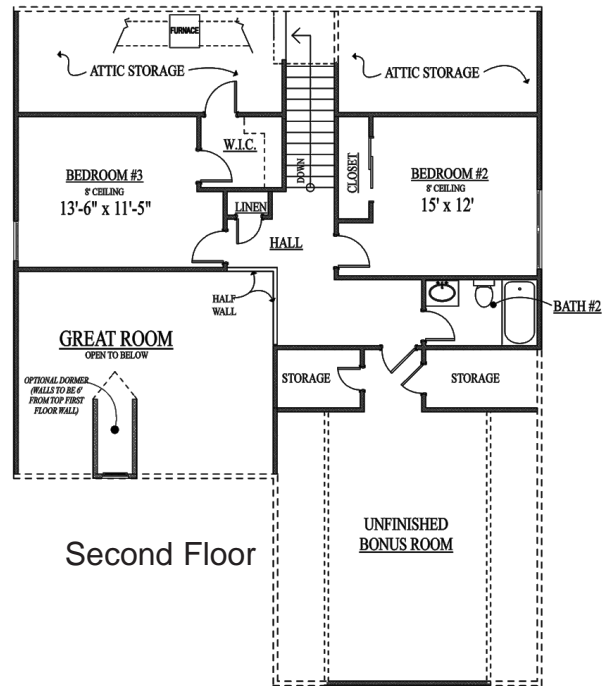
The Sunrise



First Floor



Optional
 Bonus Room
 Over Garage
 300 Sq. Ft.
 Overall - 2,187 Sq. Ft.
 Finished



Second Floor



Building for Generations

09/29/14

3445 Richmond Road, Suite 200, Lexington, Kentucky 40509, Office, (859) 277-1600
 ALL FEATURES, DESIGNS, PLANS, SPECIFICATIONS, AND PRICES ARE SUBJECT TO CHANGE WITHOUT NOTICE