



THE LEXINGTON

PROFILE

- 2866 Square Feet
- 4 Bedrooms-3 Baths
- 9' Ceilings on 1st Floor
- Quoined Corners
- Jack Arch and Keystones
- 2-Story Foyer and Great Room
- 2 Piece Crown Molding on 1st Floor
- 1 Piece Crown Molding on 2nd Floor Hallway
- Loft or Optional 5th Bedroom
- Study with Built-In Bookshelves
- 1st Floor Guest Suite with Full Bath
- Spacious Kitchen with Island and Server Top
- Catwalk with Open Railing Overlooking Family Room
- Huge Master Suite with Walk-In Closet, Tray Ceilings and Recessed Can Lighting
- Master Bath Features 5' Soaker Tub with Decorative Surround 48" Tiled Shower, and His and Hers Vanities
- Hardwood in Entry, Kitchen, Breakfast Area and Dining Room
- California Shag Carpet Throughout
- Ceramic Tile Flooring in All Baths and Laundry
- Granite Kitchen Counter Tops
- Tile Shower in Master Bath
- Optional Vaulted Ceiling in Master Suite and Bath
- Optional Walk-In Storage Area Off Master Bath
- Wrought Iron Railing on Staircase
- Optional Side Entry Garage



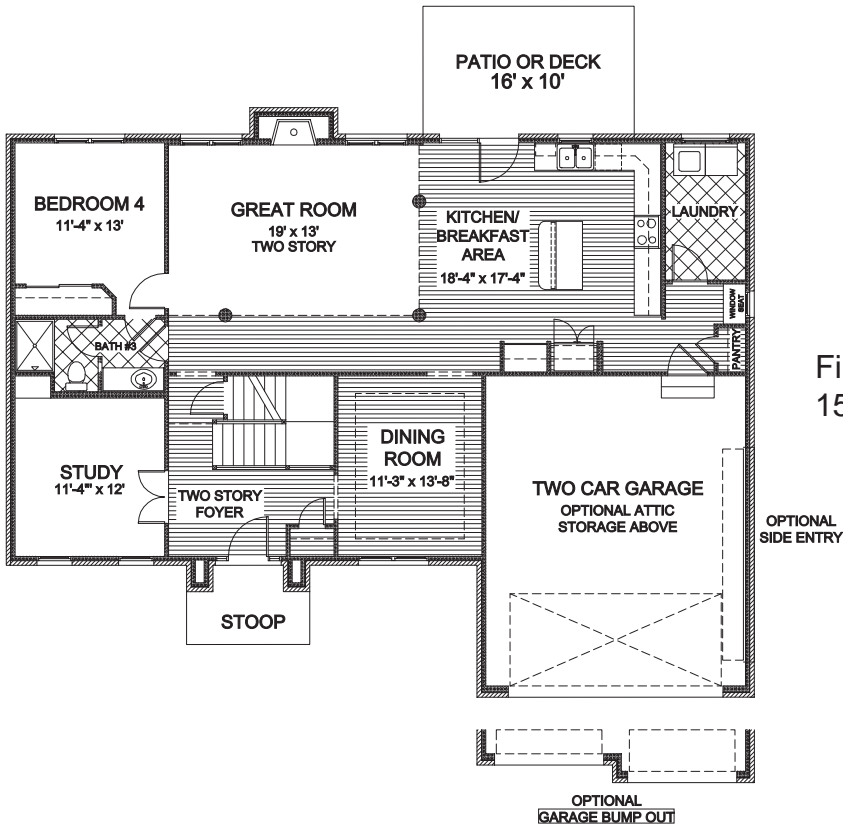
Ask your new homes specialist about the many designer features available.



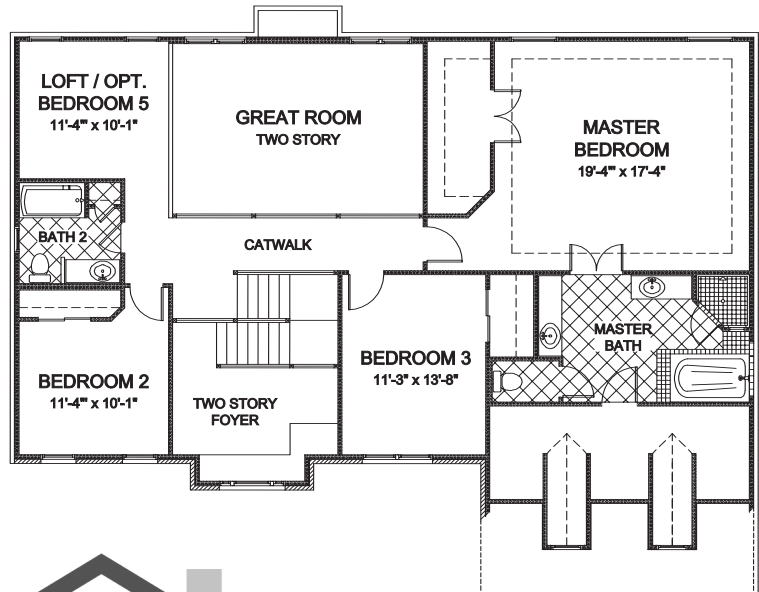
06/17/14

The Lexington

2866 Square Feet



Second Floor
1326 Sq. Ft.



06/17/14